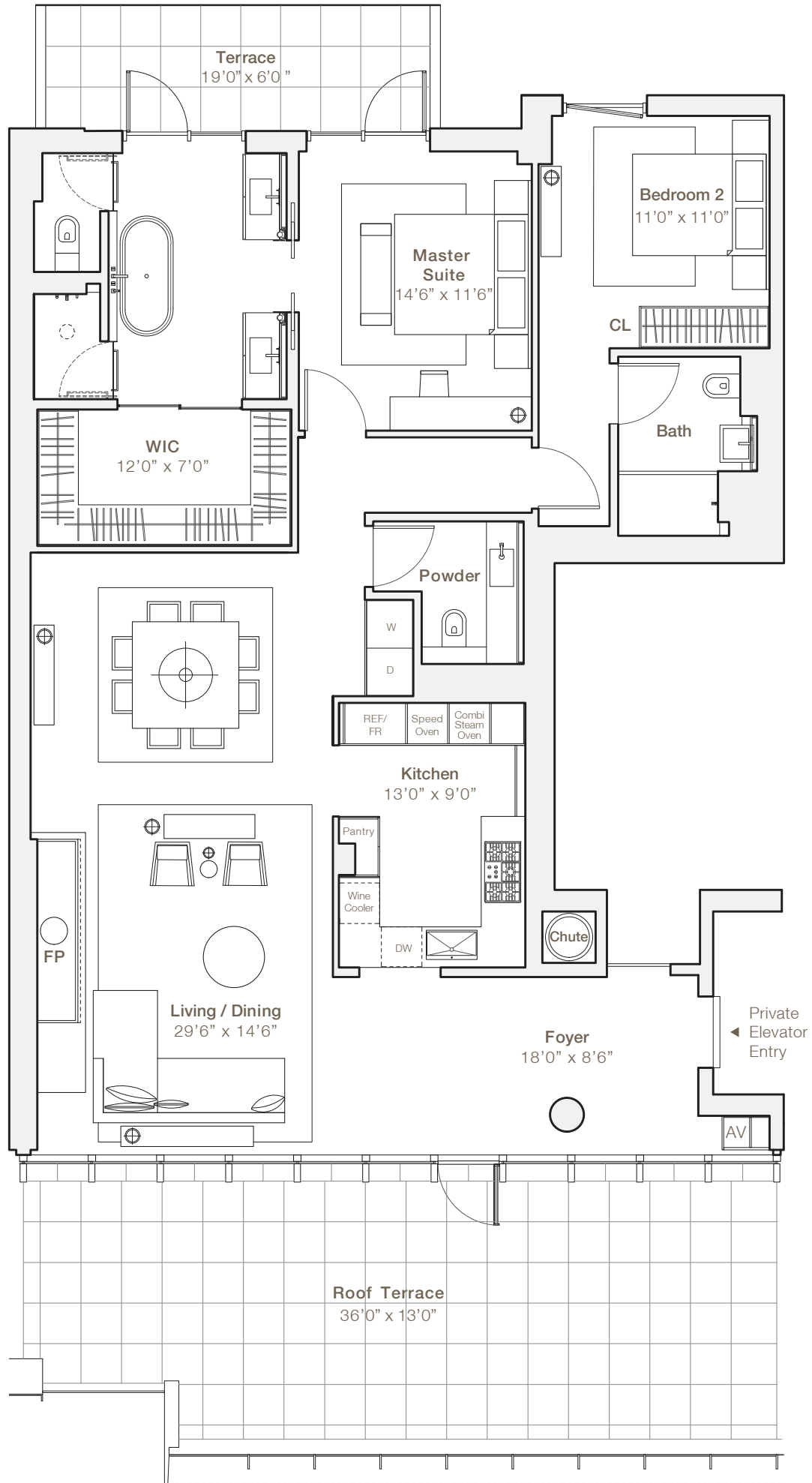


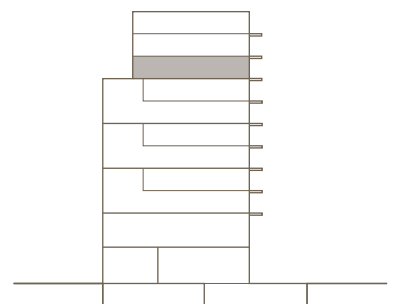
# PENTHOUSE 9C



2 BEDROOMS  
2 BATHROOMS  
POWDER ROOM  
TWO TERRACES

INTERIOR 1638 SQFT / 152 M<sup>2</sup>  
EXTERIOR 656 SQFT / 61 M<sup>2</sup>

Northern, Eastern & Western Exposure  
Up to 9'9" FT / 3M Ceilings



All square footages and dimensions are approximate and subject to normal construction variances and tolerances.