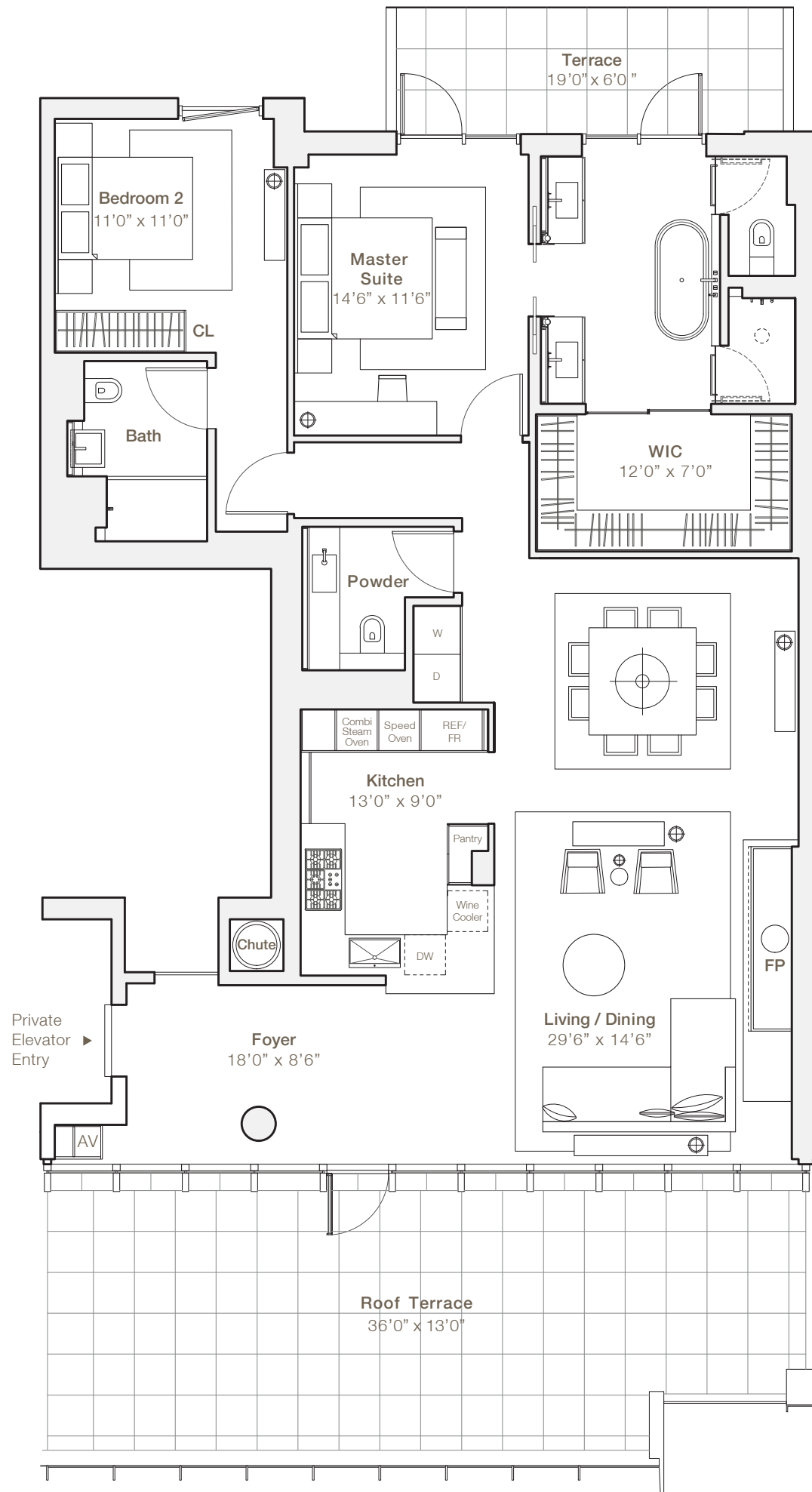


PENTHOUSE 9B



- 2 BEDROOMS
- 2 BATHROOMS
- POWDER ROOM
- TWO TERRACES

INTERIOR 1638 SQFT / 152 M²
EXTERIOR 656 SQFT / 61 M²

Northern, Eastern & Western Exposure
Up to 9'9" FT / 3M Ceilings



0' 4' 8' 16'

